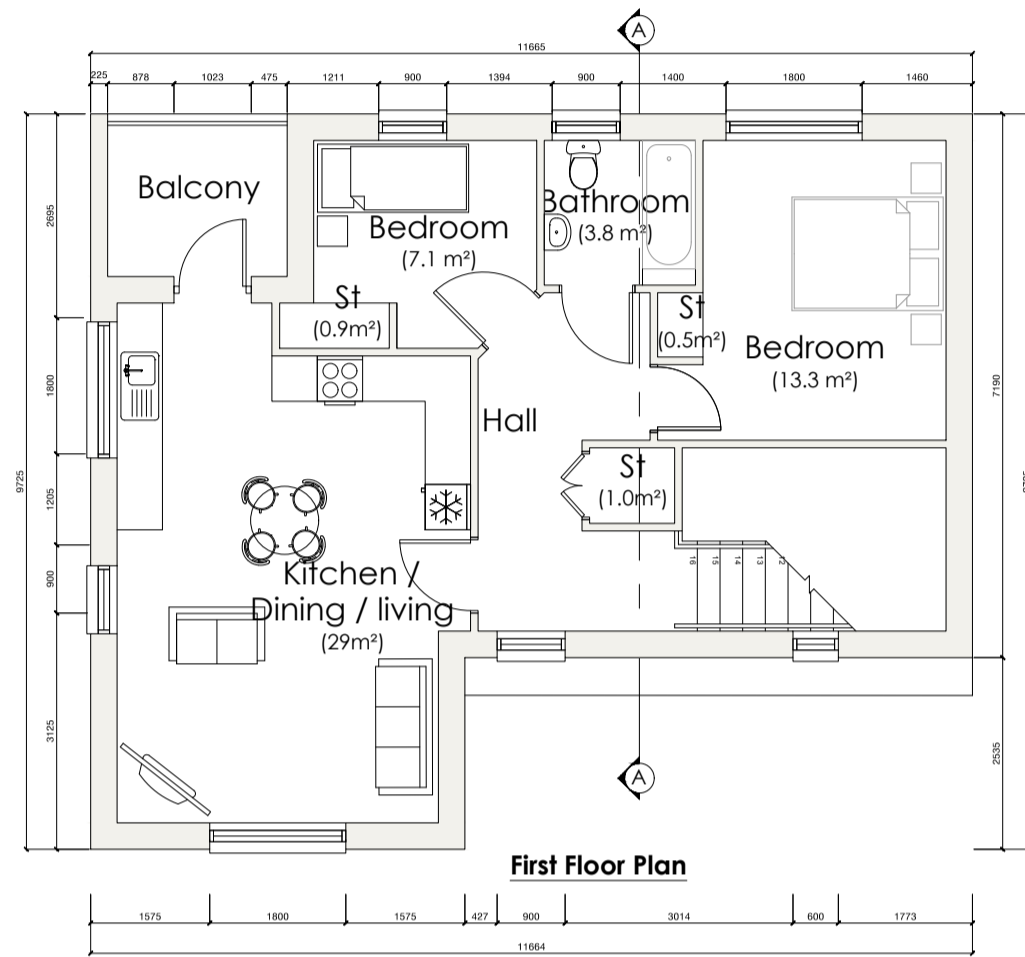


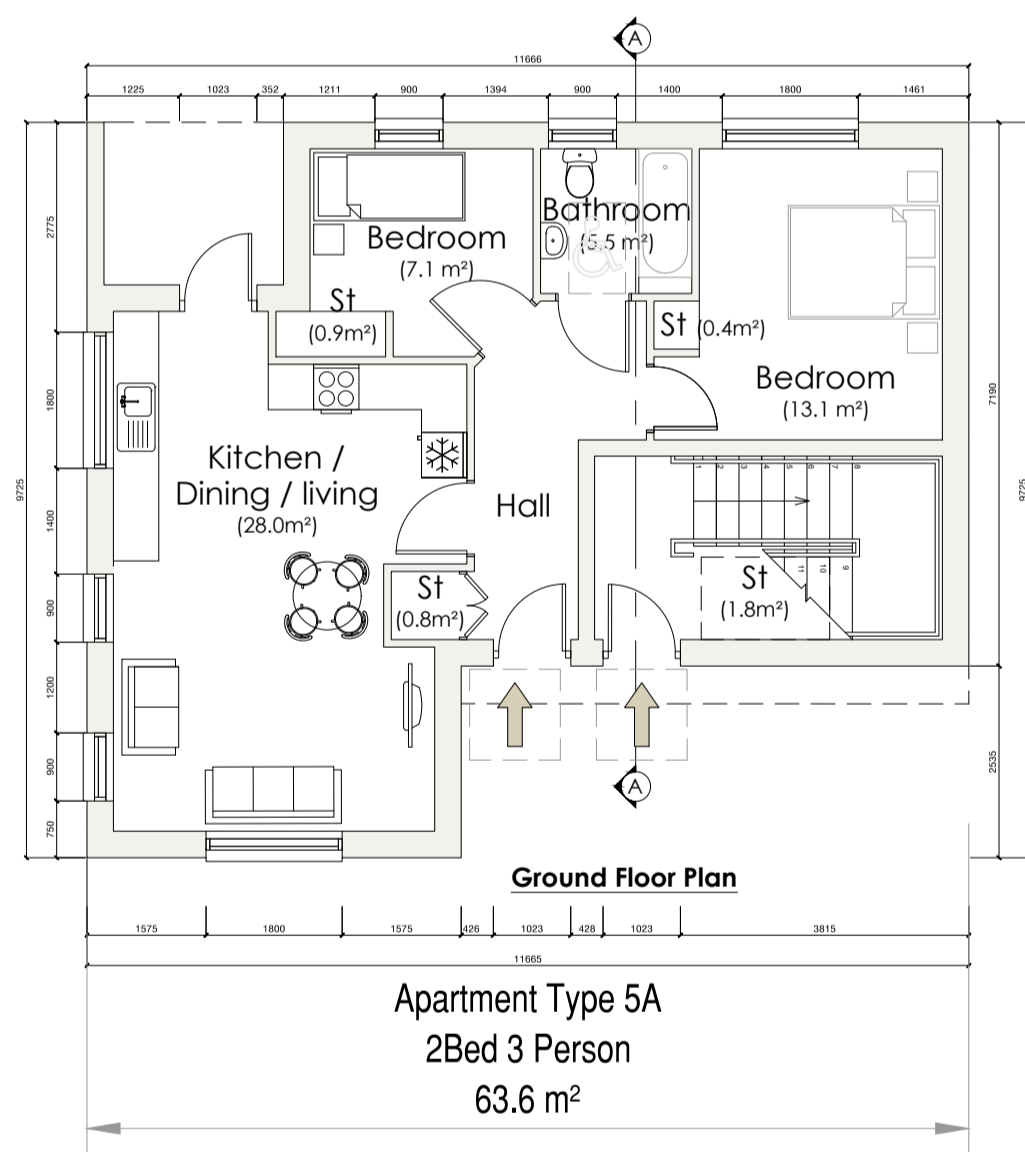
Roof Plan



First Floor Plan

Schedule of Areas		
Room	Area (m²)	Area (sqft)
Total Floor Area	63.6	68.8
Kitchen / Dining / Living	29.0	31.2
Bedroom 1 (Double)	13.3	14.4
Bedroom 2 (Single)	7.1	7.6
Bathroom	3.8	4.1
Stairs	1.0	1.1
External Area	0.9	1.0

Note: Storage equipment includes external storage shed.
 Design refers to contract in accordance with Housing Design Standards for New Apartments, Guidelines for Planning Authorities.



Ground Floor Plan

Apartment Type 5A
 2Bed 3 Person
 63.6 m²

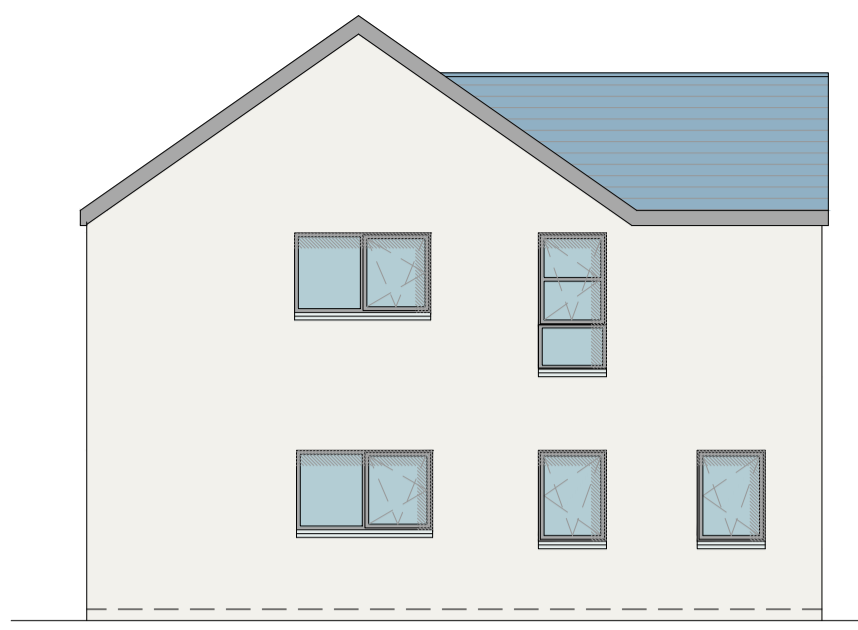
Schedule of Areas		
Room	Area (m²)	Area (sqft)
Total Floor Area	63.6	68.8
Kitchen / Dining / Living	28.0	30.1
Bedroom 1 (Double)	13.1	14.2
Bedroom 2 (Single)	7.1	7.6
Bathroom	5.5	5.9
Stairs	1.8	2.0
External Area	0.9	1.0

Note: Storage equipment includes external storage shed.
 Design refers to contract in accordance with Housing Design Standards for New Apartments, Guidelines for Planning Authorities.

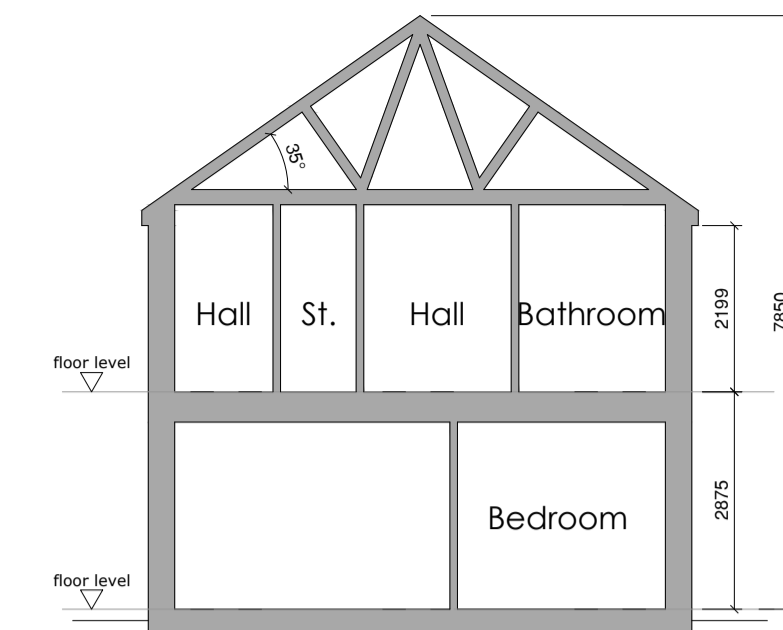


Front Elevation

- Blue/black slates to roof
- Pvc fascia, soffit, gutters and downpipes
- Double/triple glazed window units
- Proprietary render system with painted finish to continue to ground level.



Side Elevation

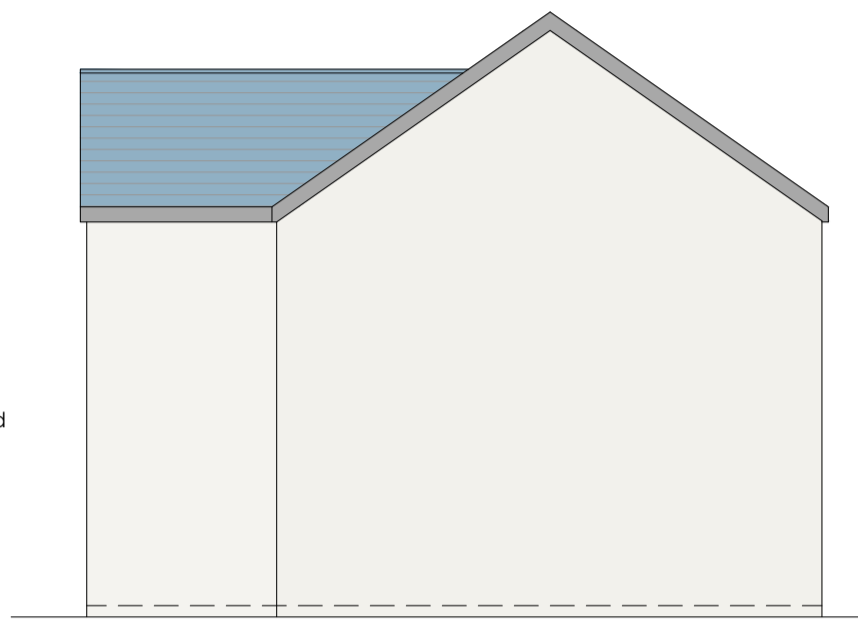


Section A-A

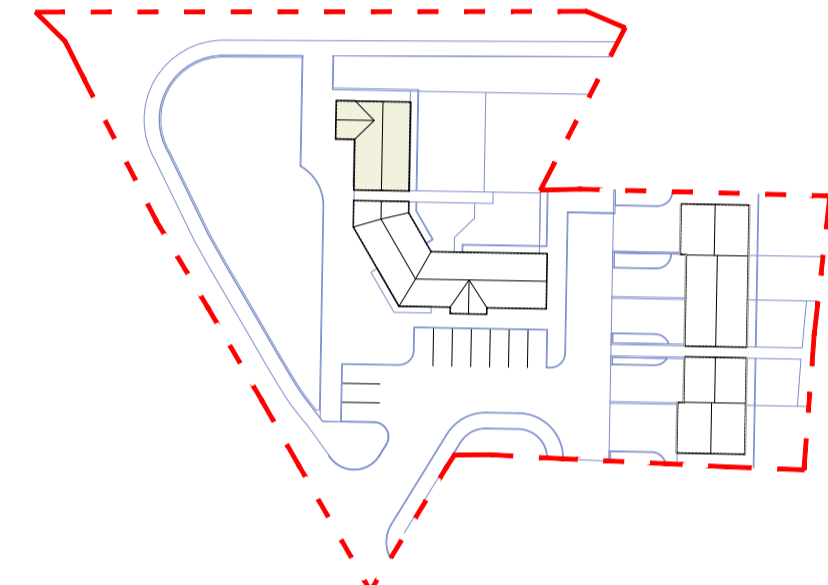


Rear Elevation

- Blue/black slates to roof
- Pvc fascia, soffit, gutters and downpipes
- Double/triple glazed window units
- Galvanised steel balustrade railings
- Proprietary render system with painted finish to continue to ground level.



Side Elevation



Revisions

x	xx/xx/xx	x
Rev:	Date:	Details:

Donegal County Council
 Architectural Services



DCC Tel: 074 91 53900 | DCC Fax: 074 91 72812

PART 8 - PLANNING

Project:
 Proposed Social Housing
 Development at
 Killylartin Heights,
 Letterkenny,
 Co. Donegal.

Drawing Title:
 Proposed Units 10-11
 and Site Sections

Drawing No: PL-06

Date:	08.01.21	Scale:	1:100 @ A1
Drawn by:	SD	Job No:	HCL 02-20